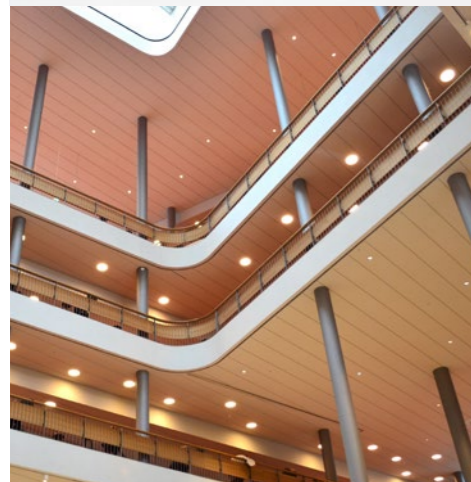


Single frame supplier  
saves time and  
effort



**DELTABEAM®**  
Frame

# A FRAME FOR ALL BUILDING TYPES



## DELTABEAM® FRAME MAXIMIZES SPACE IN MULTI-STORY BUILDINGS

- Offices
- Retail buildings
- Health care facilities
- Educational & cultural buildings
- Residential & hotel buildings
- Industrial buildings
- Car parks



View global DELTABEAM® Frame reference projects online [www.peikko.com/frame-references](http://www.peikko.com/frame-references)



# EASY PROJECT WITH A SINGLE FRAME SUPPLIER



## Want to make your projects easier to manage?

Traditionally, all the different frame components have been sourced from various suppliers, and the structural engineer and the constructor have been responsible for the compatibility of components. Keeping up with the schedule has been a challenge – and sourcing has taken a lot of time and effort from purchasers and site managers.

By sourcing the DELTABEAM® Frame from Peikko, you will ensure timely deliveries of all the composite frame components. The project is managed by our local sales office that knows local requirements and needs.

We can also offer the frame design according to your specifications. In order to find the optimal solution for your project, the design is always done in close co-operation with your local structural engineers and architects.

Suitable for all kinds of buildings, DELTABEAM® Frame combines the unique DELTABEAM® Composite Beam benefits with Composite Columns.

## MORE SPACE FOR YOUR INVESTMENT

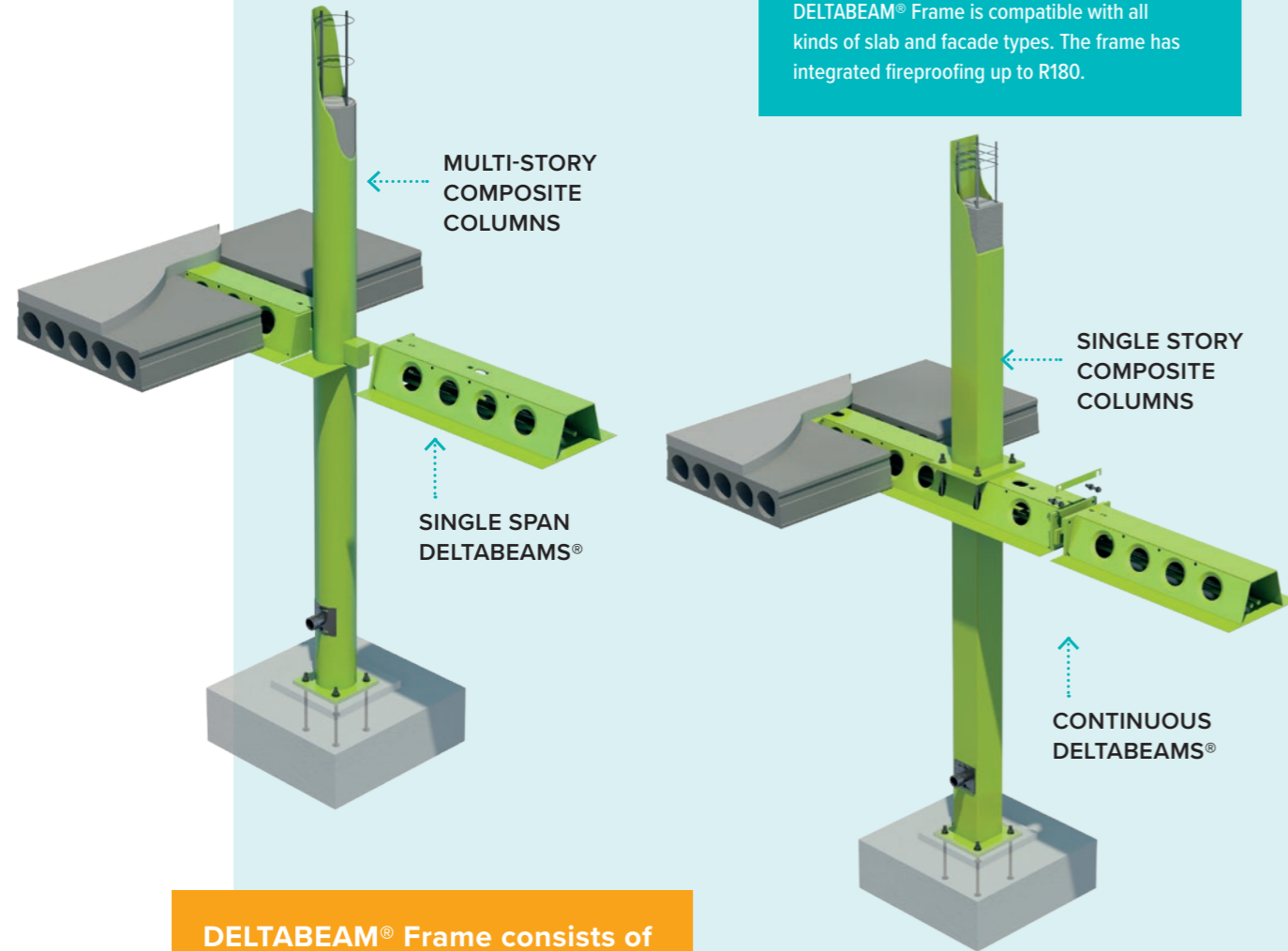
DELTABEAM® Frame maximizes the space available in two ways. Firstly, the floors are slim, meaning that you will get more room height or more floors for a given building height. Secondly, composite columns take up very little space. This translates into more floor area to sell or rent.



## Save time – fast frame erection

The frame components do not restrict design. All components are light, which makes transporting, storage, and installation easy and keeps the costs low.

DELTABEAM® Frame is compatible with all kinds of slab and facade types. The frame has integrated fireproofing up to R180.



DELTABEAM® Frame consists of DELTABEAM® Composite Beams and Composite Columns.

### DELTABEAM® COMPOSITE BEAMS

- Slim floors and grids up to 16 meters
- Integrated formwork enables special interior and facade shapes

### COMPOSITE COLUMNS

The Composite Columns are made of a hollow steel section with a rebar cage placed inside. The columns are filled with concrete on site. Available in square, rectangular and circular format in standard profiles.

### Multi-story columns

- Easy handling of high vertical loads
- Used with single span beams

### Single story columns

- Used with continuous beams for longer spans

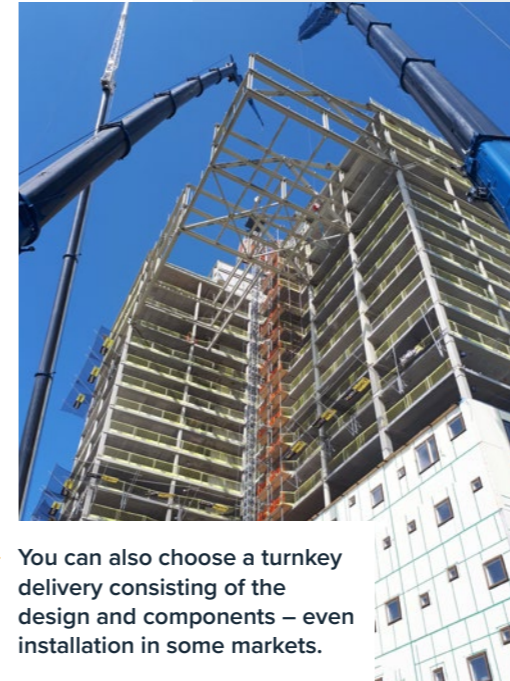
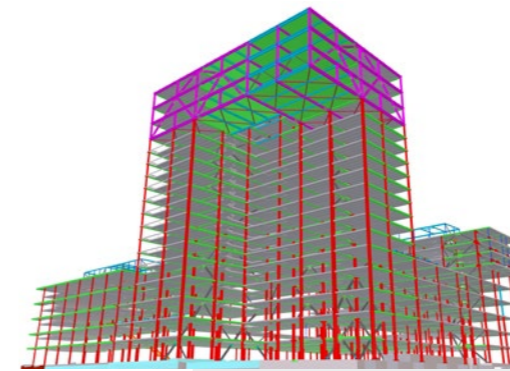
### ADDITIONAL COMPONENTS

- Other steel structures such as trusses, braces, various types of beams and columns can be included in the frame delivery
- Connection solutions such as anchor bolts and corbels
- Slab hangers/trimmer beams for slab openings
- Safety solutions

→ DELTABEAM® Frame allows for BREEAM and LEED certifications.



For more information on DELTABEAM® Composite Beam, see the DELTABEAM® brochure or visit [www.peikko.com/deltabeam](http://www.peikko.com/deltabeam)



→ You can also choose a turnkey delivery consisting of the design and components – even installation in some markets.

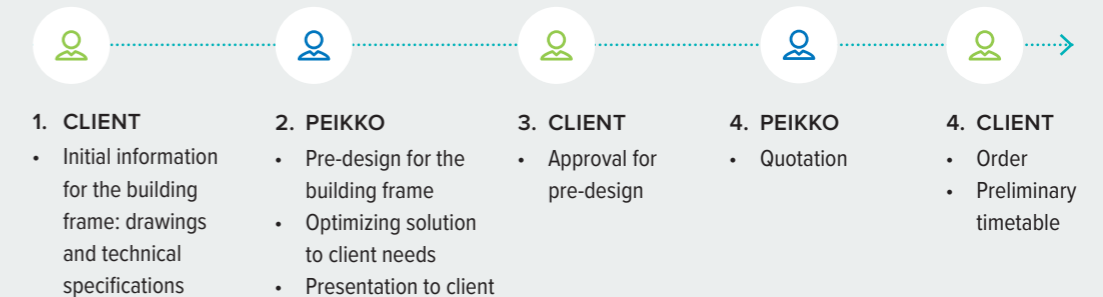


## BENEFITS OF THE DELTABEAM® FRAME

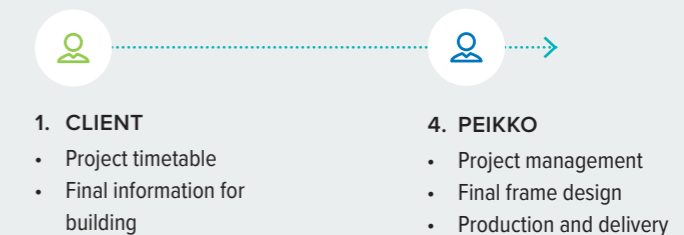
- One supplier for the entire composite frame saves time and effort
- Long spans enabling flexible open space
- Additional room height and floor space
- Easy to form architectural shapes
- Light components are easy to transport and fast to install
- Lower heating and cooling costs
- Easy and space-saving HVAC installations
- Integrated fireproofing
- Superior local service

## OPTIMIZING SOLUTION TO CLIENT NEEDS

### FRAME DESIGN AND QUOTATION



### EXECUTION PHASE



 EXPERT ADVICE LOCALLY AVAILABLE

Peikko offers expert advice during both design and construction of slim floor structures, making the use of DELTABEAM® Frame as easy as possible.

[www.peikko.com](http://www.peikko.com)



## A faster, safer, and more efficient way to design and build

Peikko supplies slim floor structures and connection technology for precast and cast-in-situ applications. Peikko's innovative solutions make your construction process more efficient.